

NetStation

Quick Start Card



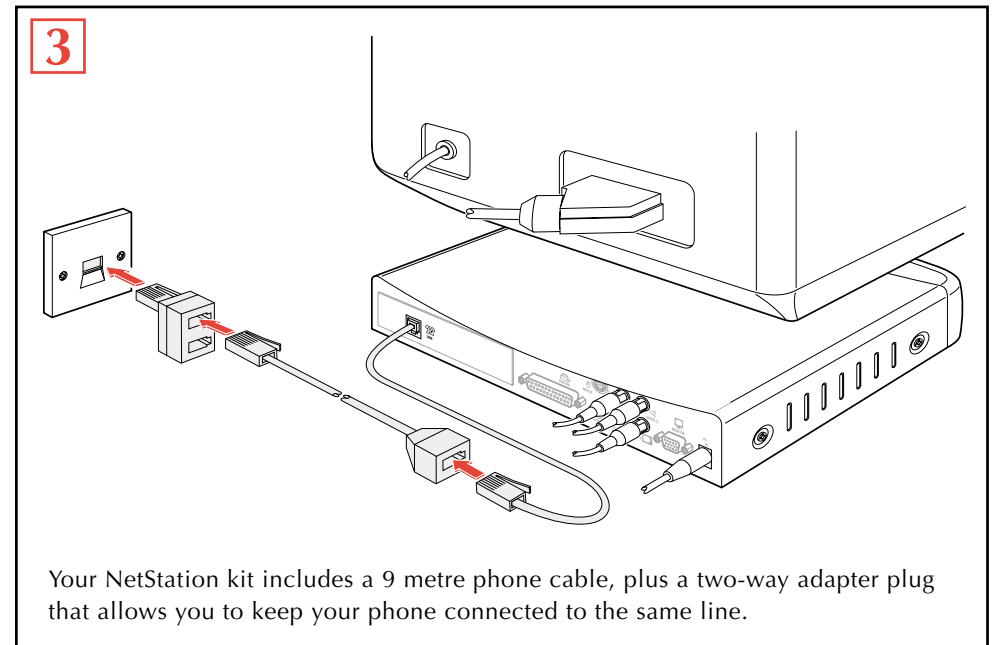
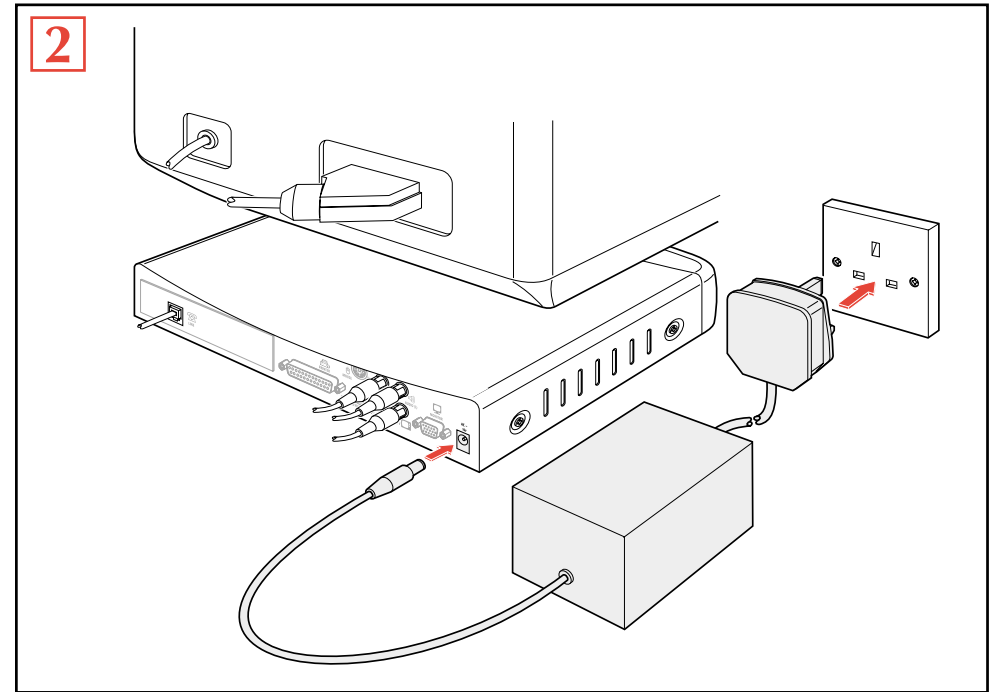
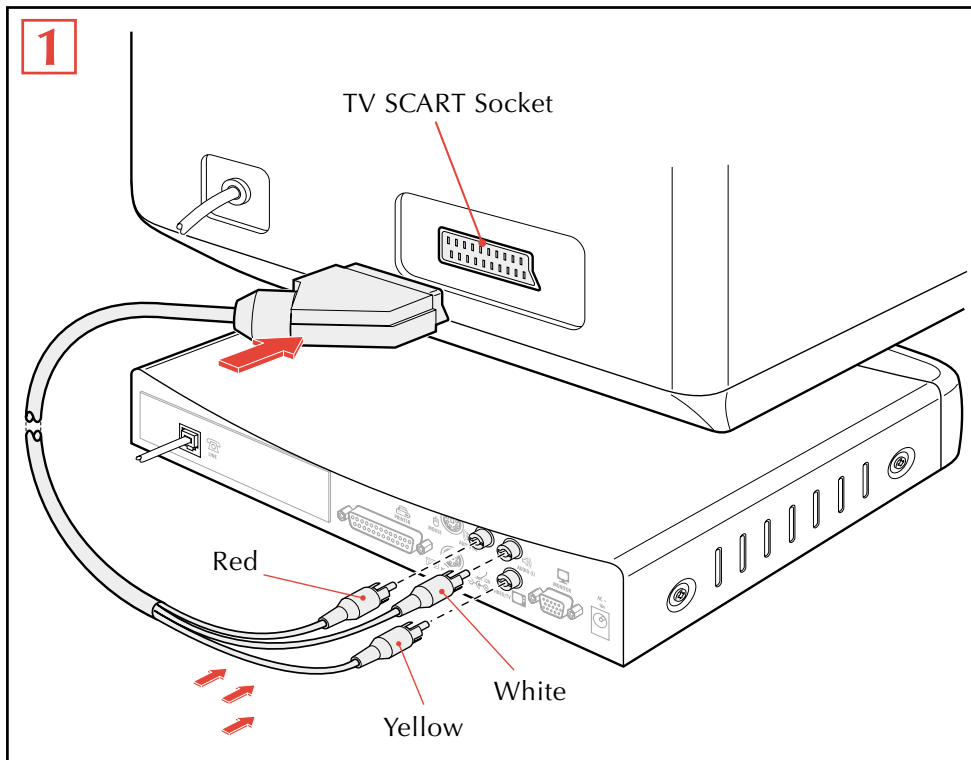
Setting up your NetStation

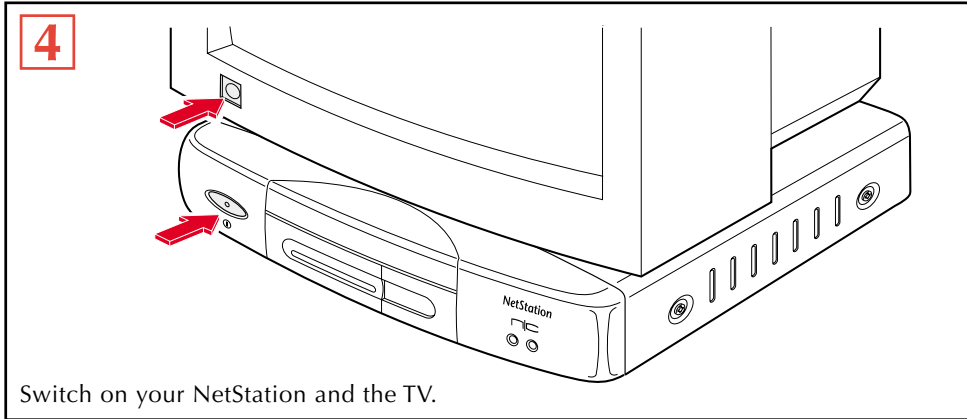
Follow these basic steps to use your NetStation with a standard tv.

In addition to your NetStation kit, you will need:

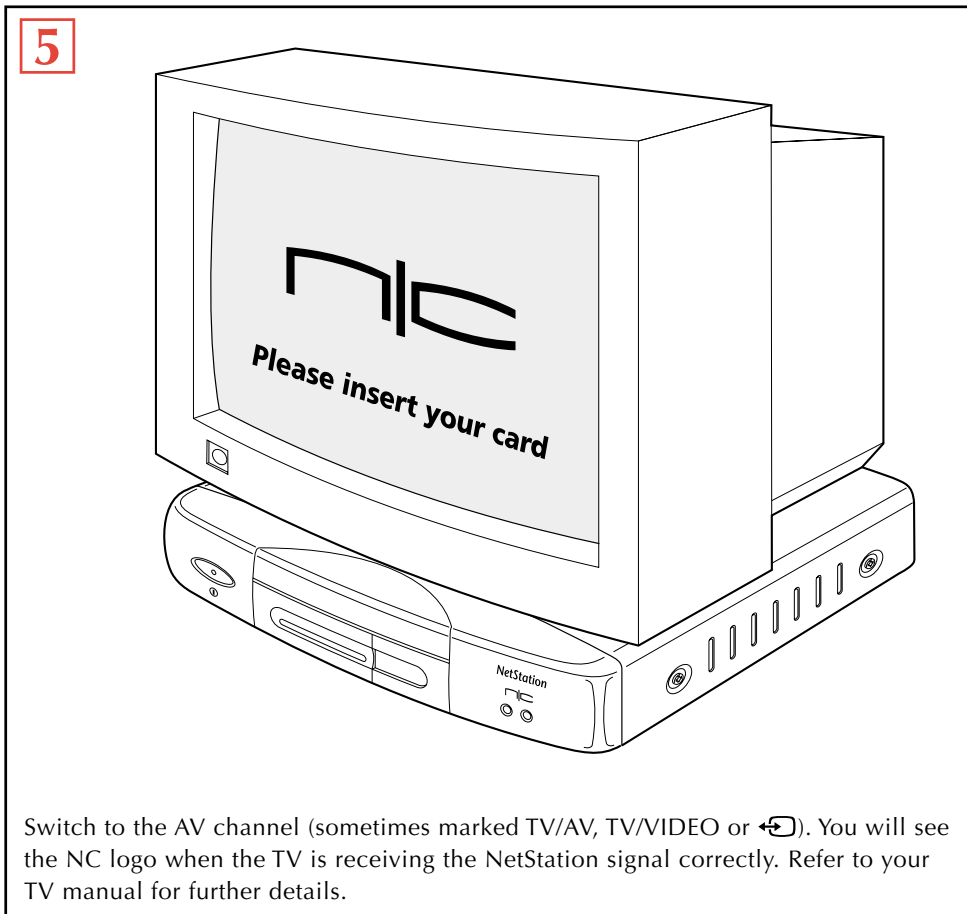
- a TV with a SCART socket,
- a nearby phone socket,
- a spare mains electricity socket,


If your TV does not have a SCART socket or you wish to connect other devices as well, refer to Appendix A of the NetStation Guide.

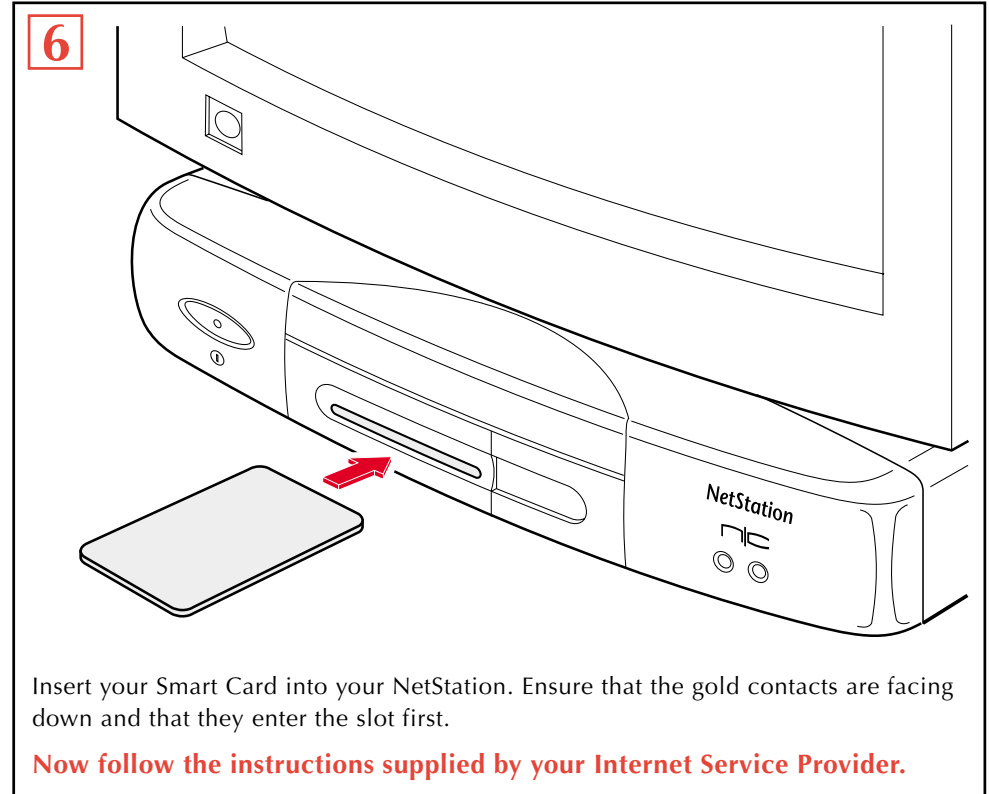




Switch on your NetStation and the TV.



Switch to the AV channel (sometimes marked TV/AV, TV/VIDEO or ) . You will see the NC logo when the TV is receiving the NetStation signal correctly. Refer to your TV manual for further details.



Insert your Smart Card into your NetStation. Ensure that the gold contacts are facing down and that they enter the slot first.

Now follow the instructions supplied by your Internet Service Provider.

Quick Troubleshooting

Further Trouble shooting tips are given in Appendix D of the NetStation Guide

No lights showing on the NetStation front panel

- Is the power adapter plugged into a nearby mains socket?
- Is the mains socket switched on?
- Is the power adapter plugged fully into the socket on the back panel?
- Remove the power adapter plug from its socket & replace it after a few seconds.

Continuous red light showing on NetStation front panel

- Press the Standby button on the NetStation front panel.

Continuous green light showing on NetStation but no image on the TV screen

- Are the Red, White and Yellow phono plugs attached to the appropriate sockets?
- Is the SCART plug connected to the SCART socket on your TV?
- Is the AV channel selected on your TV?
- If there are two SCART sockets on your TV, is the appropriate AV channel selected for the NetStation connection?

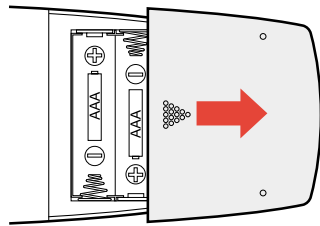
The IR Handset

■ INSERTING BATTERIES

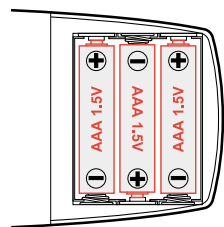
Before you can use your IR Handset you need to insert three AAA batteries.

To insert batteries:

1. On the underside of the IR Handset, open the battery cover as shown here.



2. Install three AAA batteries into the compartment, ensuring that you observe the correct polarity positions.



3. Replace the battery cover.

