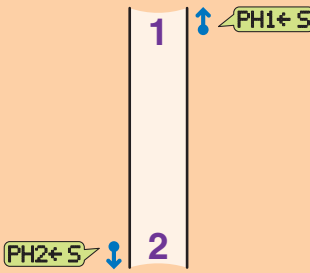


Please see the Operator's Guide for full details of setup and operation

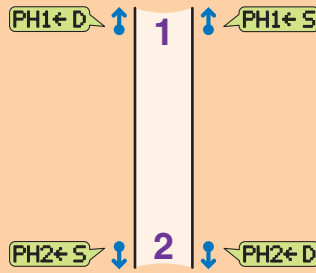
1 Set up all signal heads, cones and signs according to Highways Agency regulations.

2 approaches, 2 phases



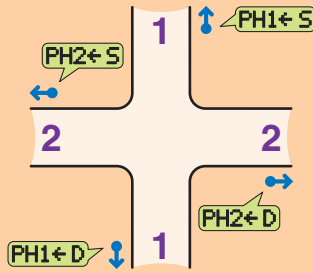
One head per approach

2 approaches, 2 phases



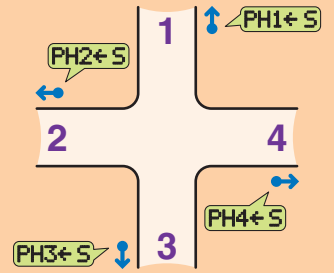
Two heads per approach

4 approaches, 2 phases



Two opposed heads

4 approaches, 4 phases



One head per approach

2 For each approach, measure the distance to the WAIT HERE sign furthest away.

3 On each remote XL signal head:



Switch on the signal head at the control panel.

NOTES

The XL Multiphase Controller should be OFF at this stage.

If a signal head is directly connected to the XL Multiphase Controller, it will automatically become the primary head on phase 1 (PH1+S).

```
PLEASE SELECT ONE
OF THE FOLLOWING
XL TWO PHASE +
MULTIPHASE
```

Press to choose (+) MULTIPHASE

Press to proceed.

Use row S for a single or primary signal head.
Use row D for a second signal head in a phase (if used).

```
USE UP & DOWN KEYS
PH1 PH2+PH3 PH4 S
PH1 PH2 PH3 PH4 D
PRESS +/- KEY
```

Press to choose (+) the correct phase number (PH1 - 4) for this head, in either row S or row D. Press to proceed.

```
MULTIPHASE OPERATION
THIS SIGNAL HEAD
PHASE TWO SINGLE
IF OK PRESS +/- KEY
```

The screen will confirm your settings. If correct, press to proceed.

If not, use to change.

```
MULTIPHASE OPERATION
PHASE TWO SINGLE
WAITING FOR MASTER
PLEASE WAIT
```

The head is now ready and waiting for control information from the XL Multiphase Controller. No signal lamps will be lit at this stage.

Repeat for all other remote heads.

4 Switch the XL Multiphase Controller to **HOLD ALL RED**.



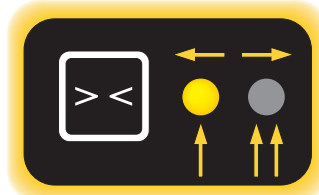
5 Press the **ON/OFF** button to power on the XL Multiphase Controller.



6 For each phase:

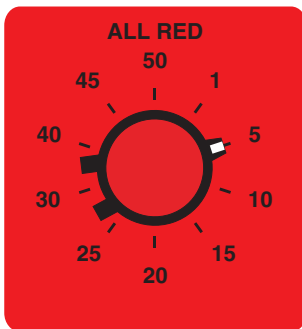


Press the **PHASE ON/OFF** button to enable each phase to be used...

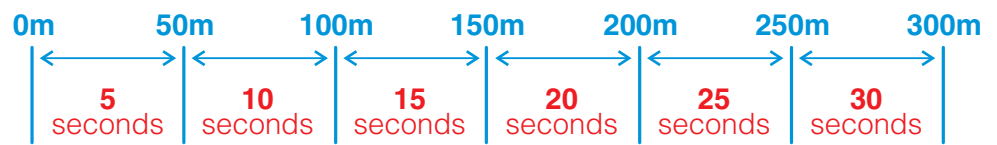


...then, press this button to choose the appropriate phase mode:

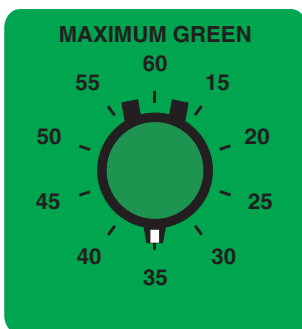
- One head per approach
- Two heads per approach
- Two opposed heads



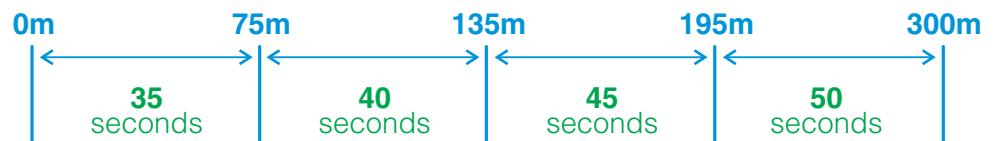
Using the measurement taken earlier (from this phase's WAIT HERE sign to the WAIT HERE sign furthest away), set the appropriate **ALL RED** time:



NOTE: On steep gradients, increase the **ALL RED** time by 5 seconds for the uphill phase(s).



Using the measurement taken earlier (from this phase's WAIT HERE sign to the WAIT HERE sign furthest away), set the appropriate **MAXIMUM GREEN** time:



Repeat for all other active phases.

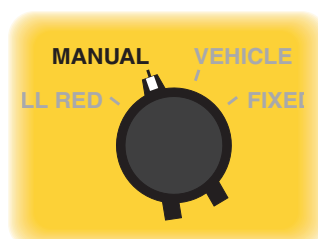
7 Press the **RUN** button.



In turn, each approach will display amber then red.

8 If traffic is tailing back significantly on one approach:

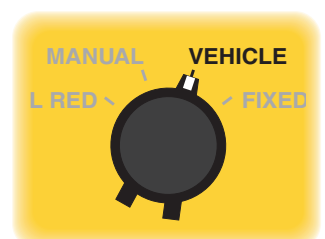
Switch to **MANUAL**...



...press the **DEMAND** button for that approach...



...then, as traffic flows, switch to **VEHICLE**.



If traffic is evenly spread, switch straight to VEHICLE.